

**ProBUILT Homes, Inc**  
(440) 255-6535

9134 Tyler Blvd.  
Mentor, OH 44060

[www.probuilt-homes.com](http://www.probuilt-homes.com)  
[sales@probuilt-homes.com](mailto:sales@probuilt-homes.com)



4 BEDROOMS



2.5 BATHROOMS



3 CAR GARAGE



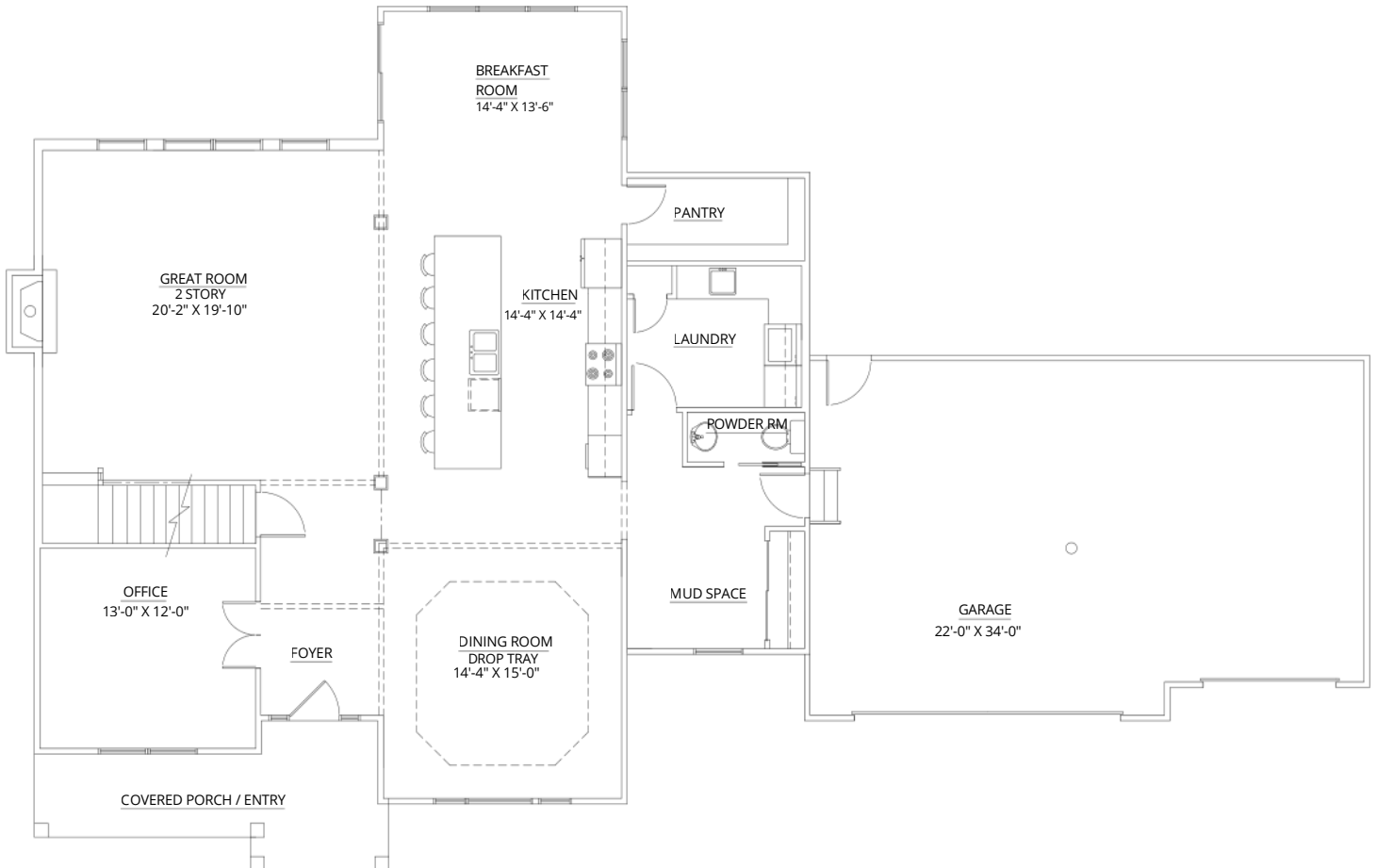
3131 SQ. FT

## ABOUT THIS HOME

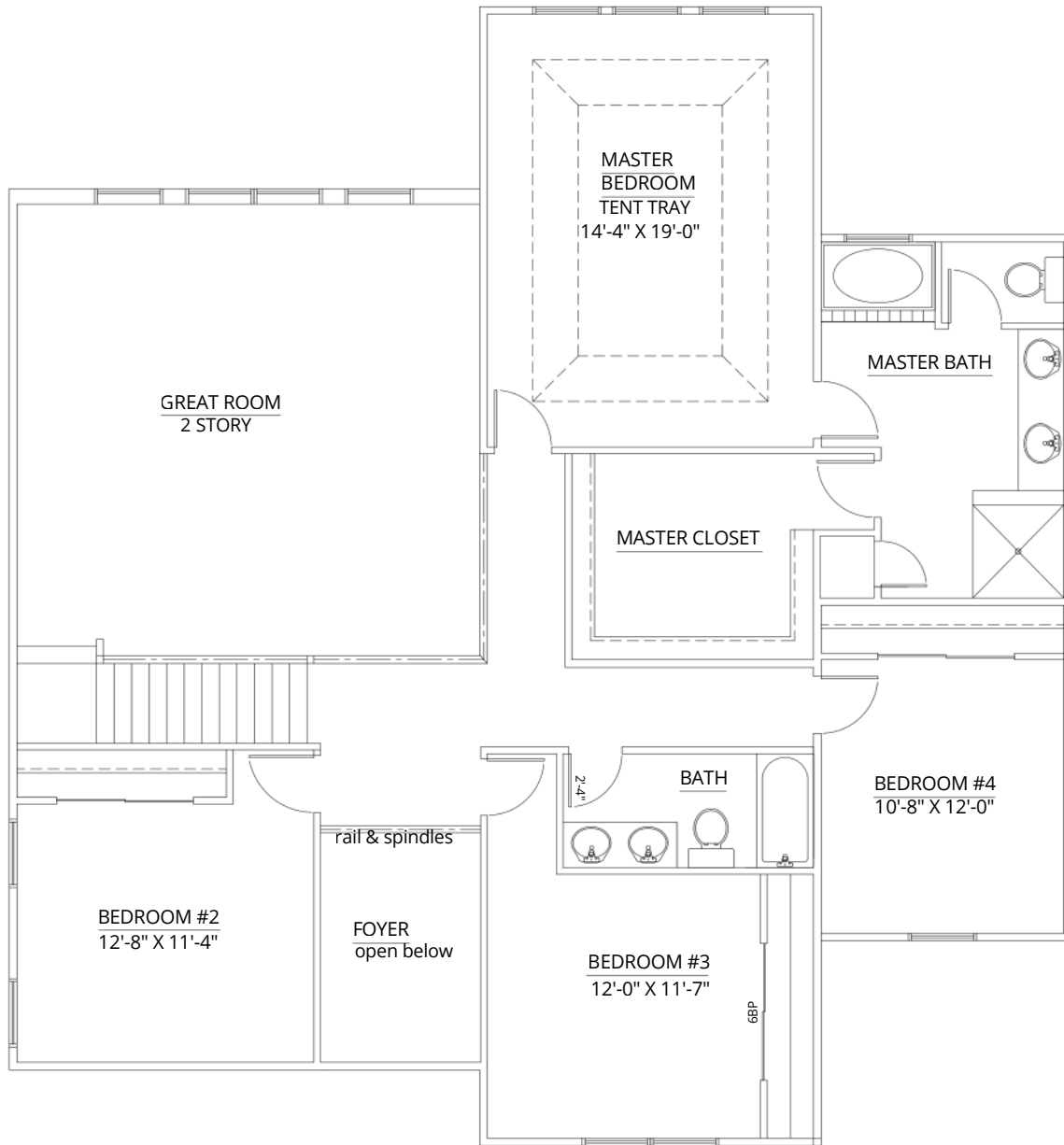
Features an eat-in kitchen with large island that is perfect for entertaining or everyday living. A dedicated office offers a quiet, focused space for work or study.

*Marshall*





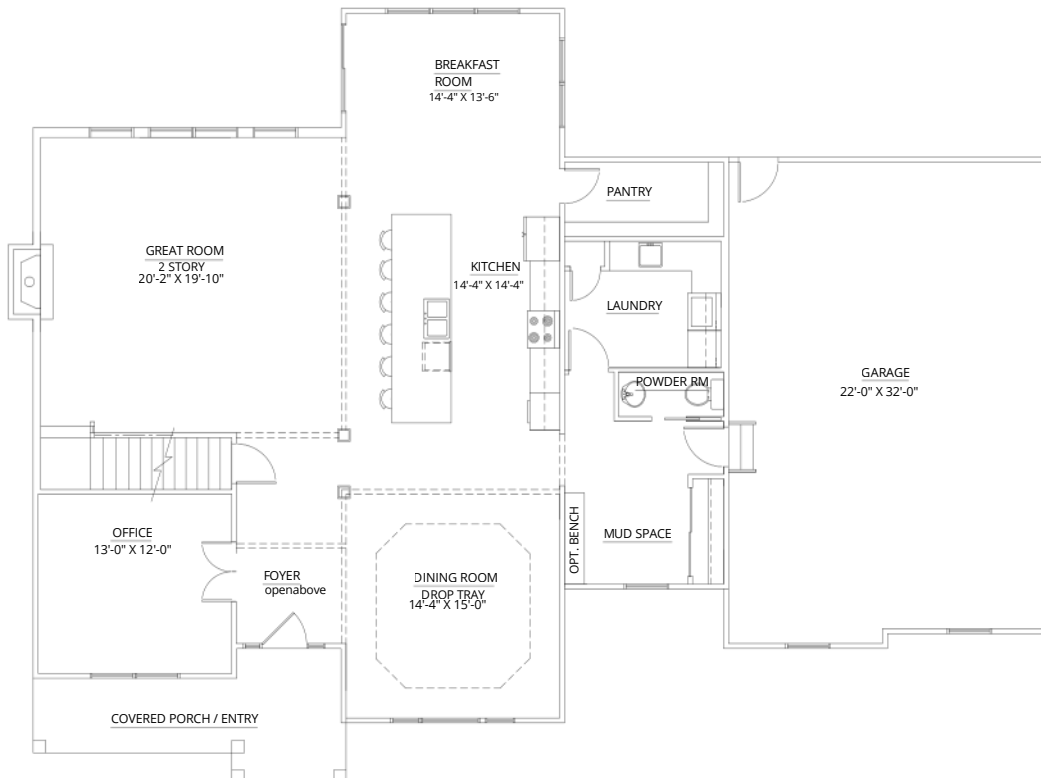
FIRST FLOOR PLAN  
1789 S.F



**SECOND FLOOR PLAN**  
**1342 S.F**



FRONT ELEVATION OPTION - SIDELOAD GARAGE



FIRST FLOORPLAN OPTION - SIDELOAD GARAGE

Some optional features may be shown or discussed. See ProBUILT sales associate for details and standard features. Floor plans are subject to change. This rendering and floor plans are for illustrative purposes only and are not intended to be a part of any purchase agreement or construction contract. In the interest of continued product improvement and the challenge of material availability, builder reserves the right to modify plans, specifications, and standard features without notice. This home plan is the exclusive copyright of ProBUILT Homes, Inc. or the plan designer. All rights reserved. Reproduction of this plan, either in whole or in part, including any form of copying or derivative works therefrom is strictly prohibited.