

**ProBuilt Homes, Inc**  
(440) 255-6535

9134 Tyler Blvd.  
Mentor, OH 44060

[www.probuilt-homes.com](http://www.probuilt-homes.com)  
[sales@probuilt-homes.com](mailto:sales@probuilt-homes.com)



4 BEDROOMS



3 1/2 BATHROOMS



2 CAR GARAGE



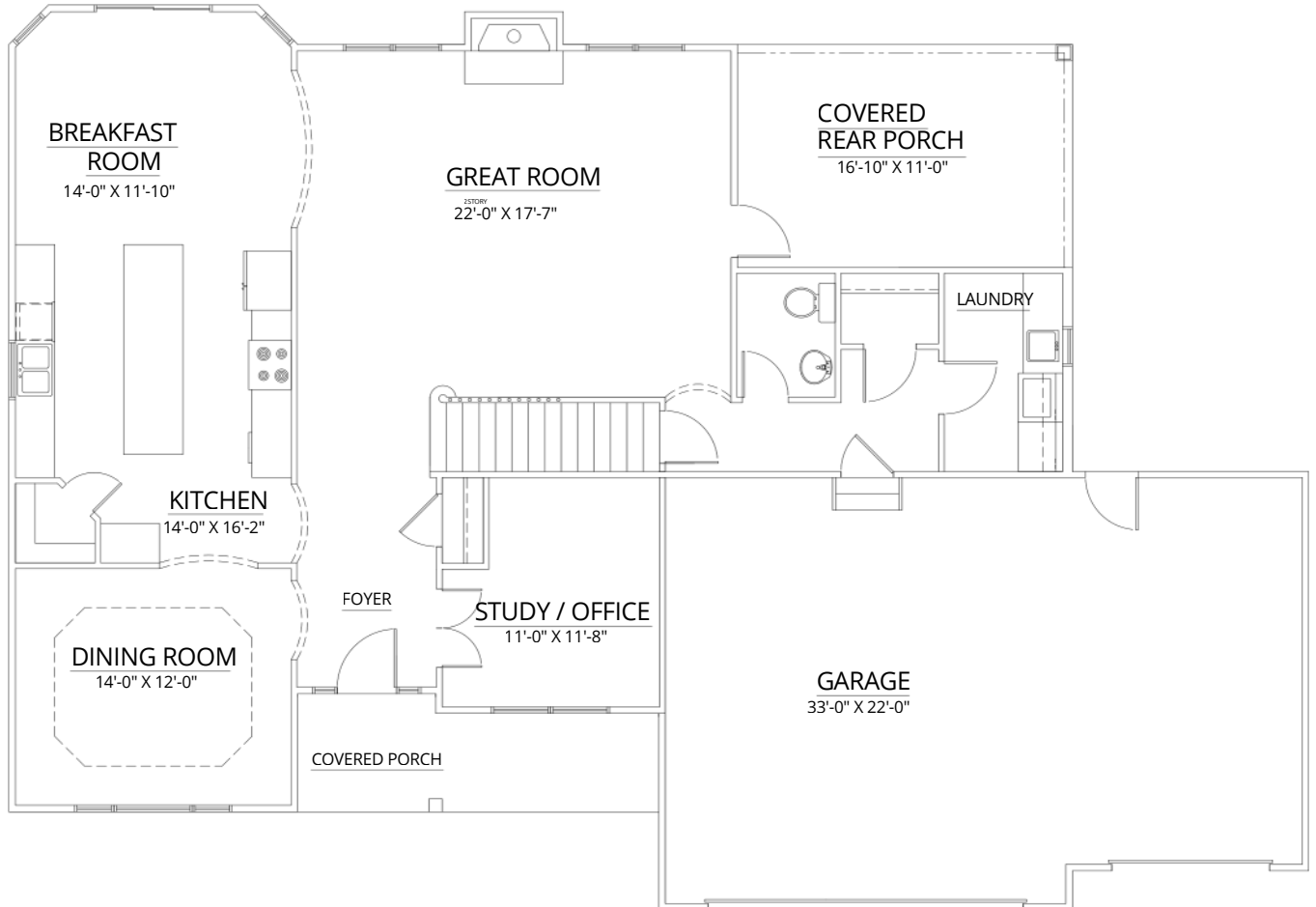
2960 SQ.FT

## ABOUT THIS HOME

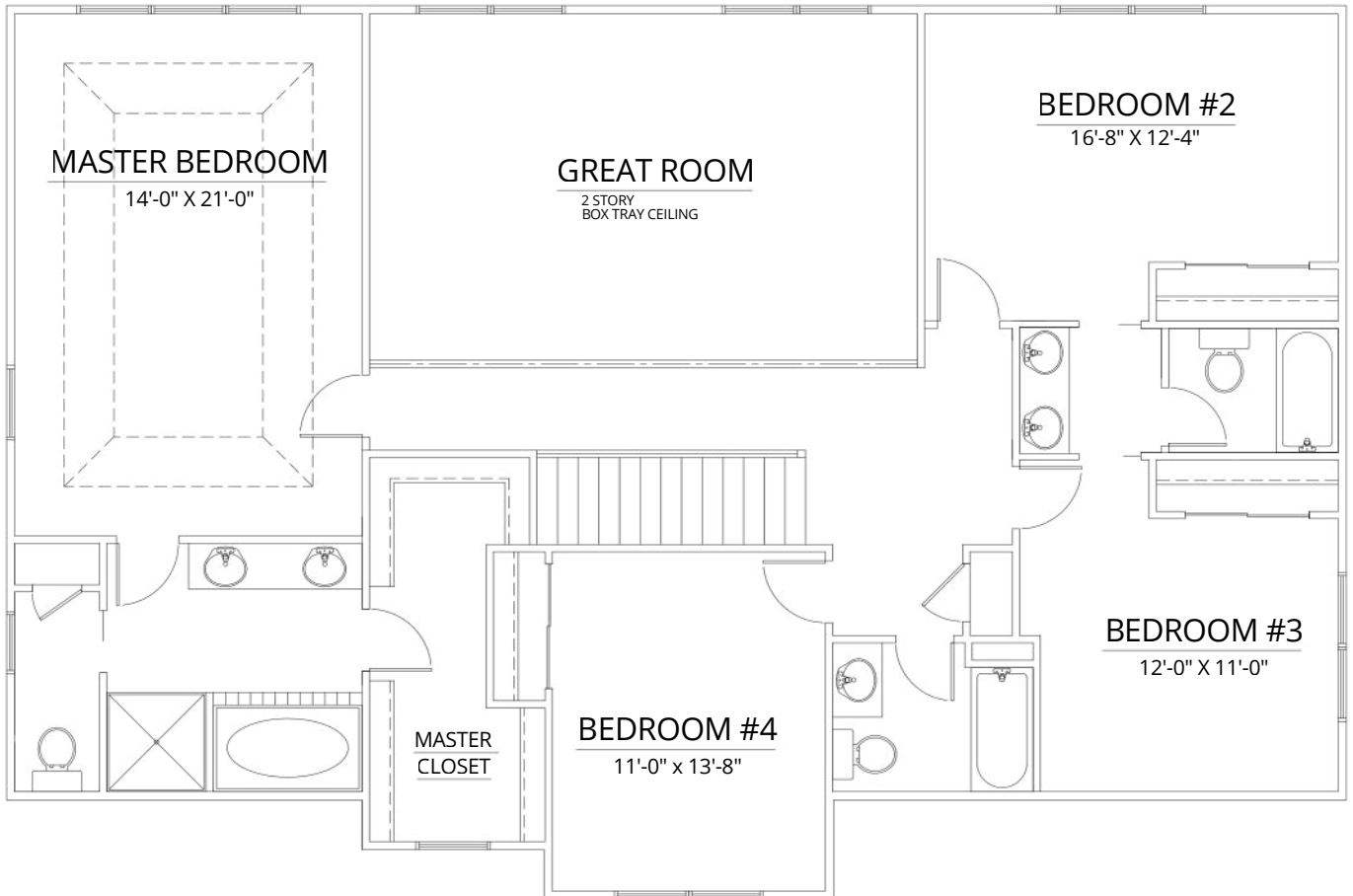
Features a two-story great room with open railing from the second floor, a large kitchen island for entertaining, and a covered rear porch that extend the living space.

*Stonemill*





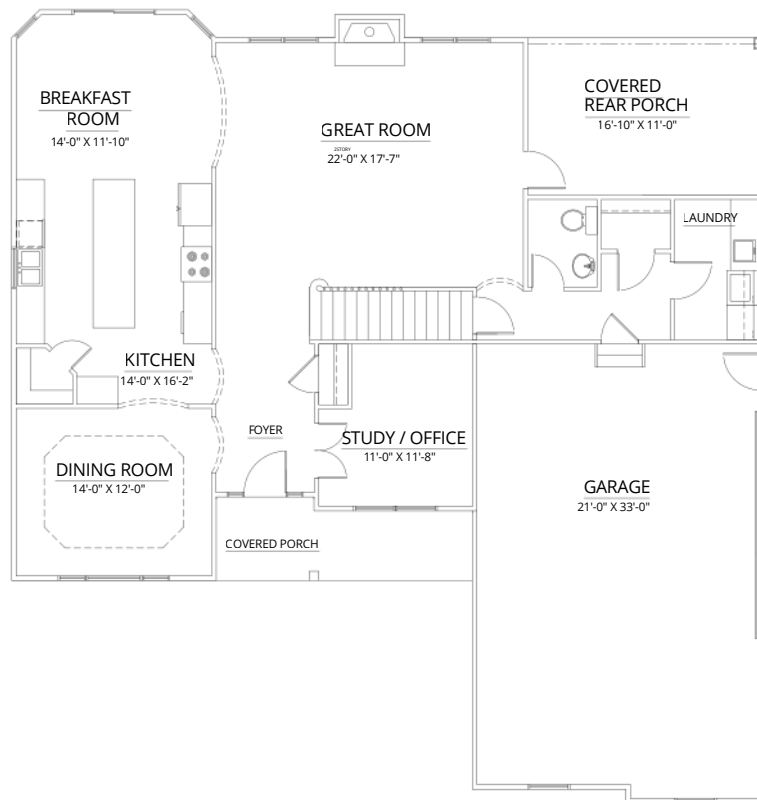
FIRST FLOOR PLAN  
1487 S.F



**SECOND FLOOR PLAN**  
1473 S.F



FRONT ELEVATION OPTION - SIDELOAD GARAGE

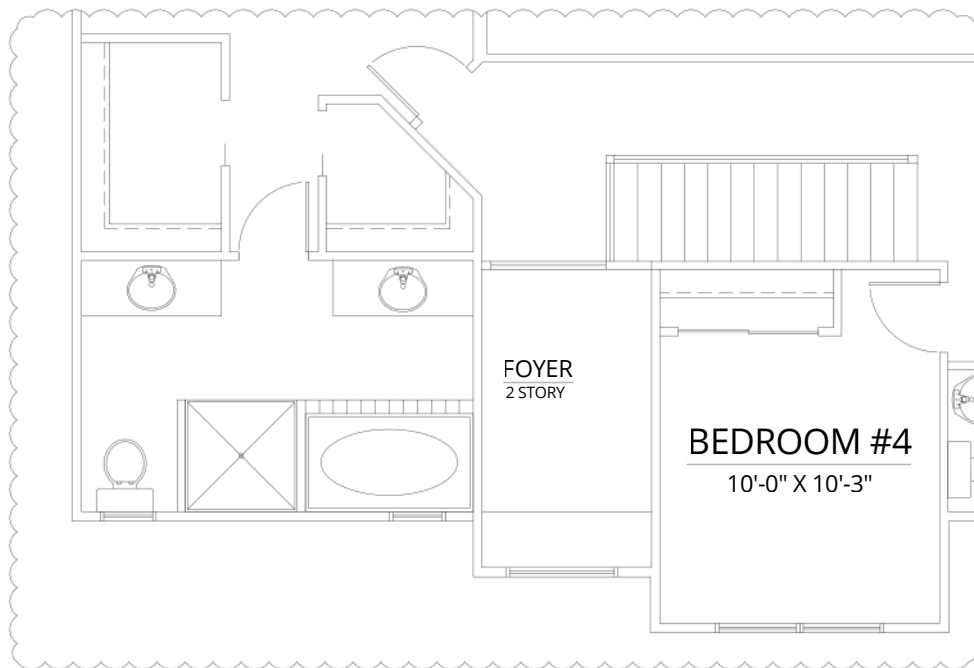


FIRST FLOOR PLAN OPTION - SIDELOAD GARAGE

Some optional features may be shown or discussed. See ProBuilt sales associate for details and standard features. Floor plans are subject to change. This rendering and floor plans are for illustrative purposes only and are not intended to be a part of any purchase agreement or construction contract. In the interest of continued product improvement and the challenge of material availability, builder reserves the right to modify plans, specifications, and standard features without notice. This home plan is the exclusive copyright of ProBuilt Homes, Inc. or the plan designer. All rights reserved. Reproduction of this plan, either in whole or in part, including any form of copying or derivative works therefrom is strictly prohibited.



**2ND FLOOR REC ROOM OPTION**  
ADDS 308 S.F.



**MASTER BATH/FOYER OPTION**

# OPTIONAL MASTER BATH / FOYER

---

PROBUILT HOMES

THIS DRAWING AND ANY AND ALL IDEAS AND DESIGNS  
CONTAINED HERIN ARE THE SOLE PROPERTY AND  
EXCLUSIVE COPYRIGHT OF PROBUILT HOMES AND ARE  
NOT TO BE USED WITHOUT WRITTEN PERMISSION.