

**ProBuilt Homes, Inc**  
(440) 255-6535

9134 Tyler Blvd.  
Mentor, OH 44060

[www.probuilt-homes.com](http://www.probuilt-homes.com)  
[sales@probuilt-homes.com](mailto:sales@probuilt-homes.com)



2-3 BEDROOMS



2 BATHROOMS



2 CAR GARAGE



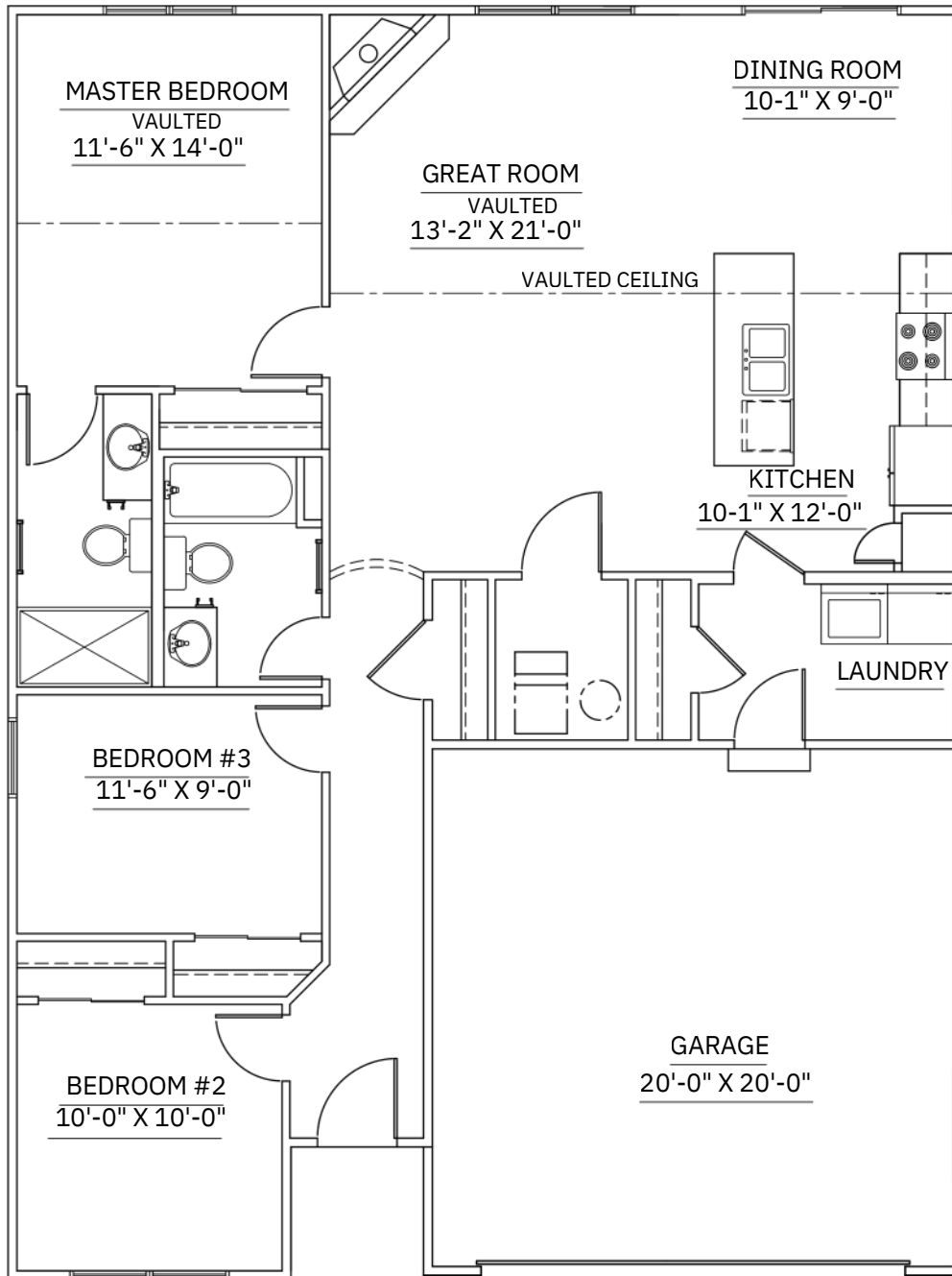
1301 SQ. FT

## ABOUT THIS HOME

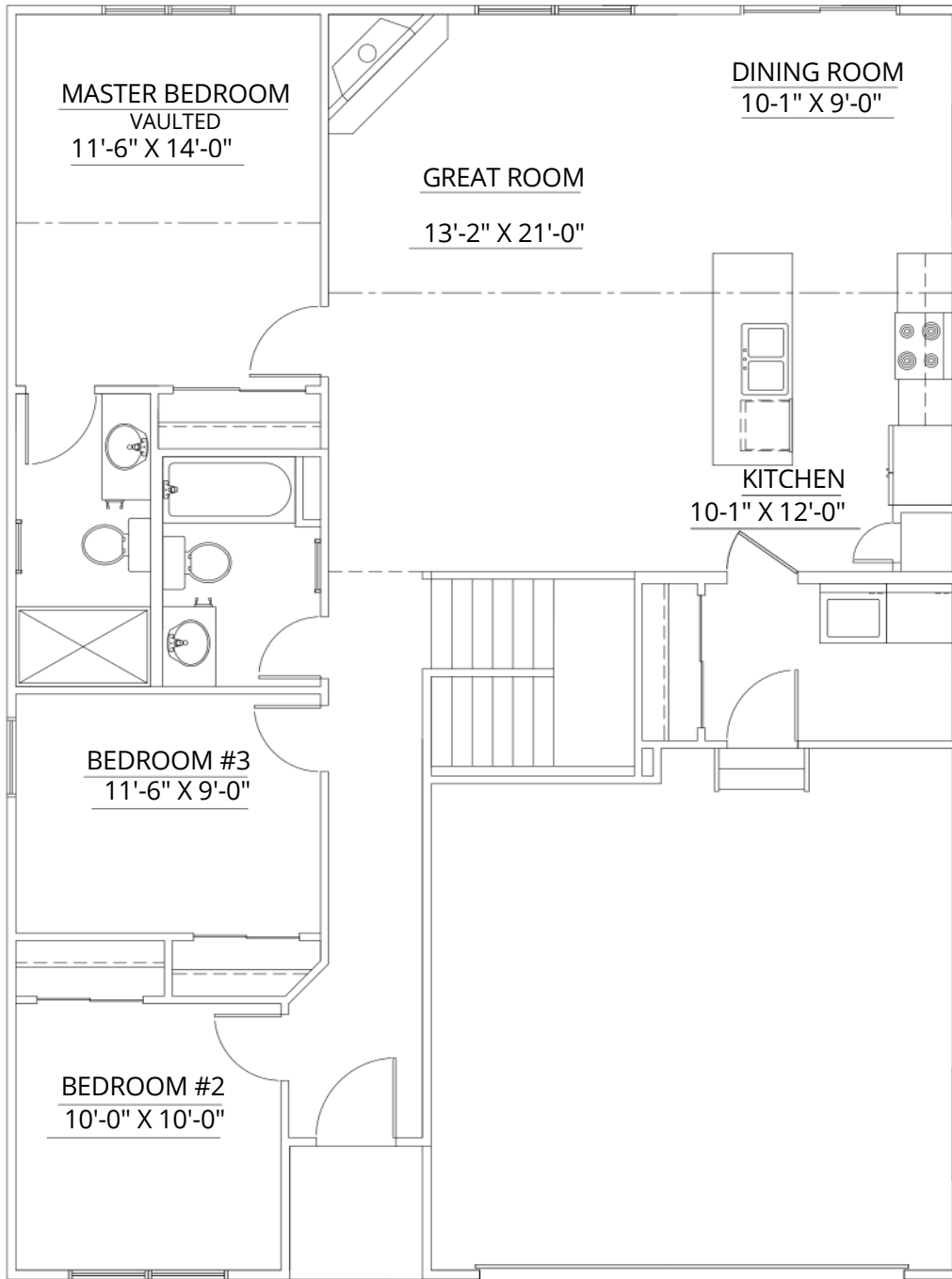
Single-level convenience with modern openness. Featuring vaulted ceilings and plenty of natural light, perfect for both everyday living and entertaining.

*Zephyr*

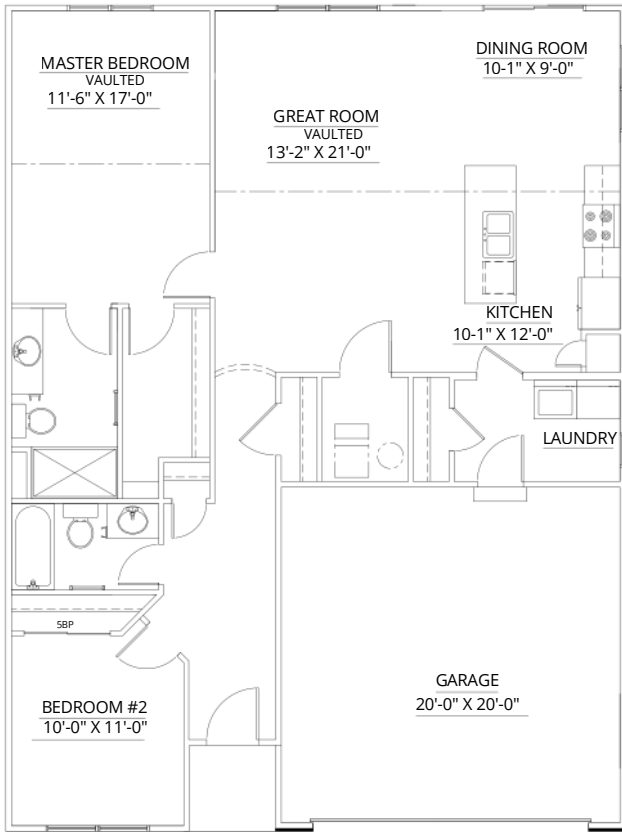




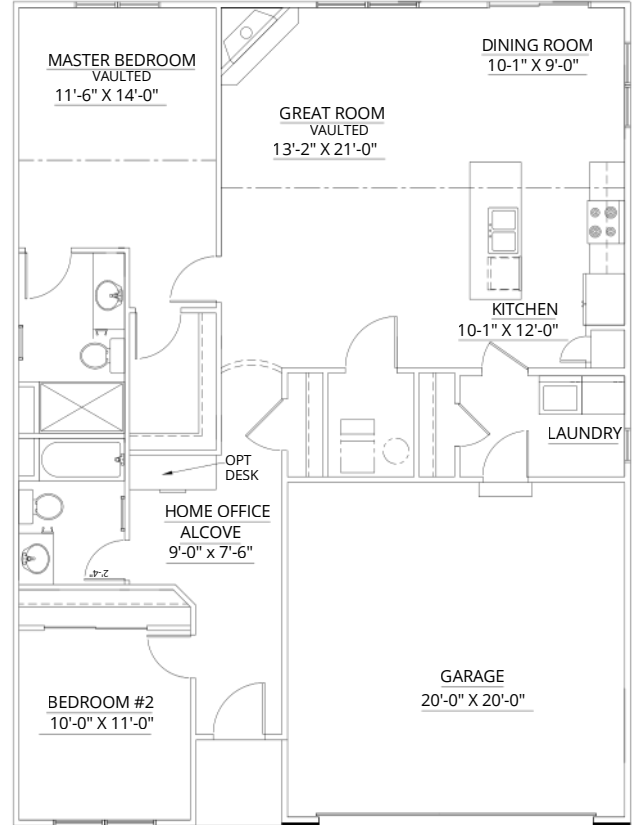
FIRST FLOOR PLAN - (3) BEDROOM SLAB  
1301 S.F



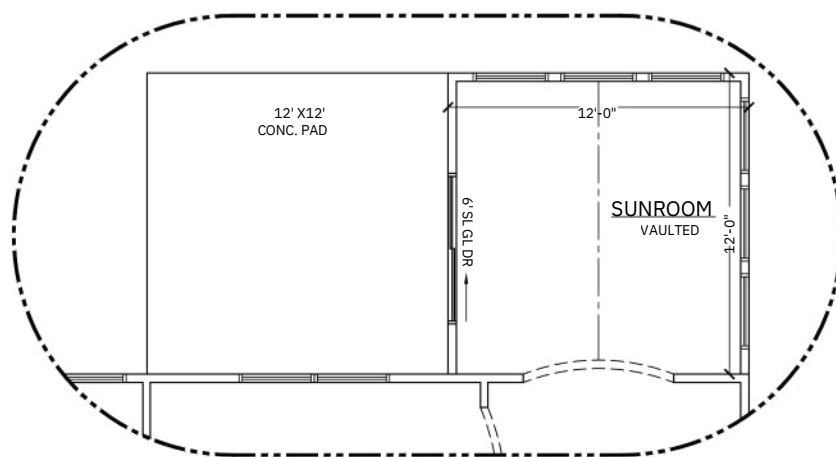
FIRST FLOOR PLAN - (3) BEDROOM W/ BASEMENT  
1301 S.F



(2) BEDROOM - SLAB  
1301 S.F.



(2) BEDROOM W/ HOME  
OFFICE ALCOVE - SLAB  
1301 S.F.



OPTIONAL SUNROOM

Some optional features may be shown or discussed. See ProBuilt sales associate for details and standard features. Floor plans are subject to change. This rendering and floor plans are for illustrative purposes only and are not intended to be a part of any purchase agreement or construction contract. In the interest of continued product improvement and the challenge of material availability, builder reserves the right to modify plans, specifications, and standard features without notice. This home plan is the exclusive copyright of ProBuilt Homes, Inc. or the plan designer. All rights reserved. Reproduction of this plan, either in whole or in part, including any form of copying or derivative works therefrom is strictly prohibited.